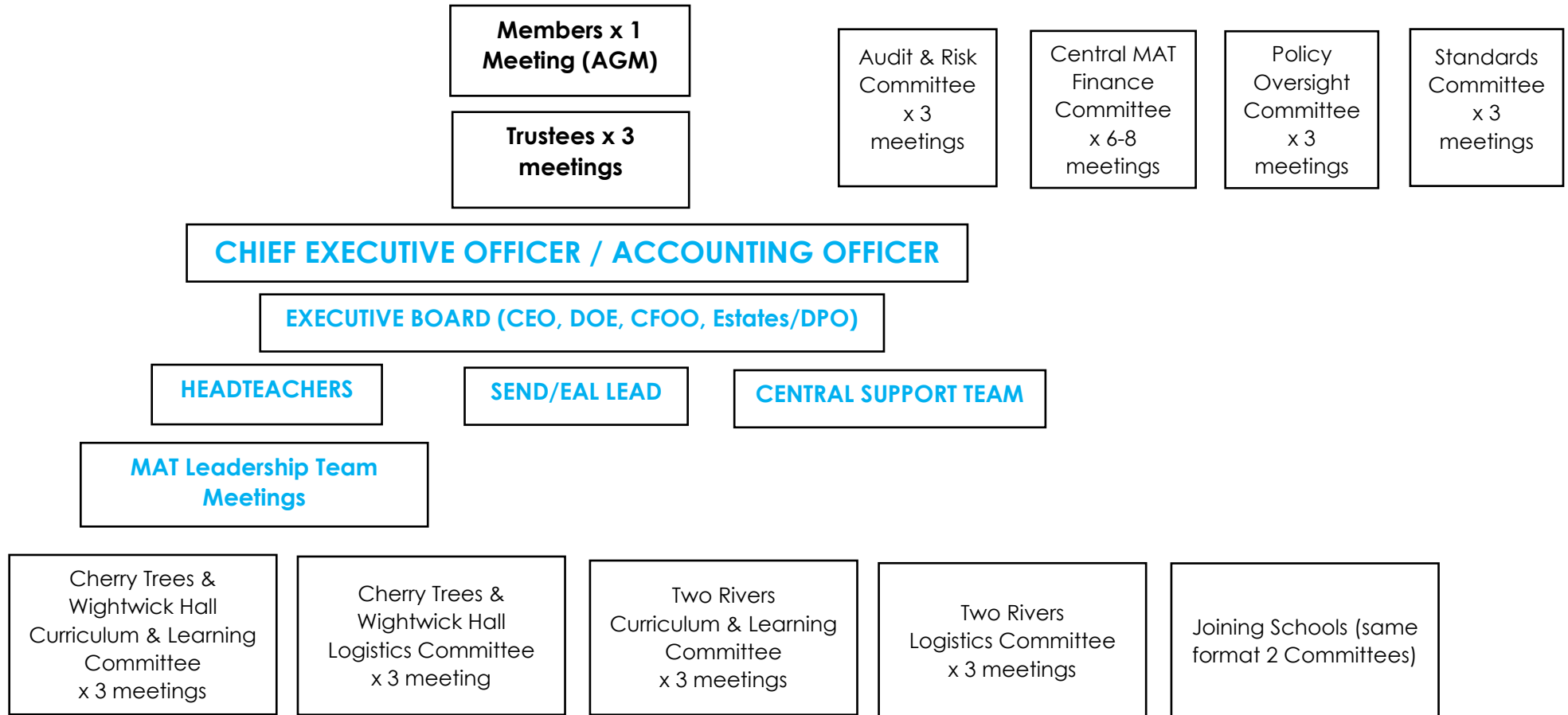


Endeavour Structure (**Management** v Monitoring)



NOTE: The Governor Committees at local school level will have devolved power. They will monitor the progress of the School Development Plan focusing on any identified risks to finance or educational performance. It is best practice for the chair to attend both meetings, so they have a complete overview.

The Curriculum and Learning Committee will be about Curriculum, Data, Attendance, Exclusions, Safeguarding, Development Plan, SEF, Assessment, Marking and Teaching Quality.

The Logistics Committee will focus on Staffing, CPD, Use of Budget, Resources, Health & Safety, building or capital spending, ICT, Staff Attendance, Performance Management and including Staff Code of Conduct.